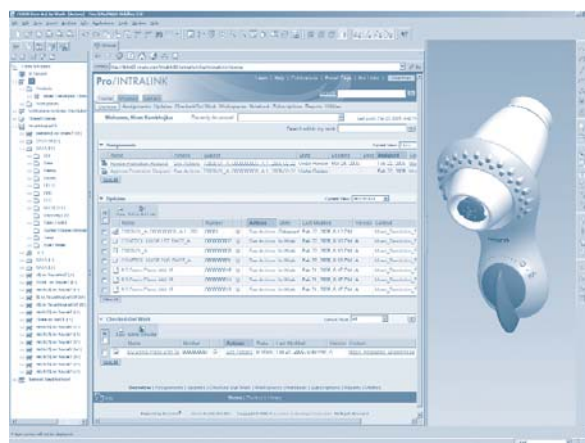


# Top 8 Reasons to move from Pro/INTRALINK 3.x to Pro/INTRALINK 8.0

With its new Web-based architecture built on Windchill technology, plus major capability and performance enhancements, Pro/INTRALINK 8.0 improves the productivity of Pro/ENGINEER users and workgroups.

Now simpler to use, more powerful and connected to the web, Pro/INTRALINK 8.0 is the ultimate workgroup data management solution for Pro/ENGINEER.

Here are the top 8 reasons for moving to Pro/INTRALINK 8.0.



Pro/INTRALINK features a new streamlined user interface that's fully integrated with Pro/ENGINEER

## 1. High Performance—Speeds Wide Area Network (WAN)

In today's highly competitive environment, engineering teams are now spread across the globe. With dispersed teams accessing a single shared database, you need exceptional performance from your Wide Area Network (WAN). Pro/INTRALINK 8.0 provides many times the WAN performance of previous versions for distributed workgroups, while maintaining comparable LAN performance. That means greater design productivity, lower overhead costs and faster time to market.

## 2. Web Connectivity—Enables distributed product development

Today's collaborative design environment includes multiple contributors—distributed engineering organizations, non-engineering groups, manufacturing organizations. The right people must be able to access the right information easily and efficiently. With its modern, Web-based architecture, Pro/INTRALINK 8.0 enables all appropriate stakeholders, to have instant access to relevant data.

## 3. Scalability—Accommodates more users, more complex processes

Need to add new designers, manufacturing engineers or enterprise users, to your team? No problem. Pro/INTRALINK 8.0 is 100% scalable, so it can easily handle an increased data management workload when adding new users. And as your needs grow, that scalability means you can painlessly upgrade Pro/INTRALINK 8.0 to Windchill PDMLink 8.0, for broader enterprise data management and product development process management power. In addition, an upgrade to Windchill PDMLink gives you a direct path to PTC's Product Development System (PDS).

## 4. Simplicity—Streamlined Graphical User Interface, simpler architecture

With Pro/INTRALINK 8.0, Pro/ENGINEER users can perform all data management commands directly within the Pro/ENGINEER Wildfire user interface. Data management functions such as downloading and uploading models are fully integrated with Pro/ENGINEER. That integration means all Pro/INTRALINK 8.0 data processing is virtually transparent to the Pro/ENGINEER user. And with the new, highly efficient user interface of Pro/INTRALINK 8.0, engineers can perform common data management tasks with up to 40% fewer mouse clicks! It's that simple.

## 5. Appropriate—Comprehensive Pro/ENGINEER Data Management

The new Pro/INTRALINK 8.0 delivers the Pro/ENGINEER data management capabilities of Pro/INTRALINK 3.x. Moreover, it delivers full support for advanced Pro/ENGINEER capabilities such as Family Tables, Skeletons, and Simplified Representations.

## 6. Investment Protection—Free upgrade for active Pro/INTRALINK customers

Pro/INTRALINK 8.0 is available free of charge to active PTC Maintenance customers, thus protecting your Pro/INTRALINK license investment. Also, as a mainstream PTC product, Pro/INTRALINK customers benefit from PTC's ongoing investment in future product enhancements because Pro/INTRALINK 8.0 now shares the same modern Web architecture of Windchill PDMLink. The new Pro/INTRALINK 8.0 architecture provides a solid foundation for carrying Pro/INTRALINK well into the future.

## Capability Comparison: Pro/INTRALINK 3.x, Pro/INTRALINK 8.0, Windchill PDMLink 8.0

Capabilities	Pro/INTRALINK 3.x	Pro/INTRALINK 8.0	Windchill PDMLink 8.0
<b>Product information control</b>			
Pro/ENGINEER data management	●	●	●
Drag-and-drop with Pro/ENGINEER Wildfire <sup>1</sup>		●	●
Heterogeneous mechanical and electrical CAD integrations			●
Document management	•	○	●
Optional archive of information		●	●
<b>Product development process control</b>			
Automated processes driven by workflow			●
Change management (Simple, fast and full tracks, etc.)	•	•	●
Configuration management	•	•	●
States and gates based upon lifecycle management	•	○	●
Turnkey ERP integration with business logic (Windchill ESI)			●
Seamless interoperability with optional project collaboration and management (Windchill ProjectLink)			●
Optional classification and design reuse (Windchill PartsLink classification and reuse)			●
<b>Enterprise accessibility</b>			
Broad information access with Web browser-based interface	•	●	●
Dynamic preview for Pro/ENGINEER users	•	•	●
Optional visualization client	○	●	●
Optional ECAD design validation with PTC's InterComm®			●
Enterprise pricing for non-engineering users			●

Capability Key: • = Limited ○ = Partial ● = Complete

Pro/INTRALINK 8.0 requires Pro/ENGINEER Wildfire 2.0

### 7. Unification—Growth Path for Data Management

Now that Pro/INTRALINK 8.0 shares the same architecture as Windchill 8.0, PTC customers now have a single, consistent and unified data management path for your current and future needs. In the table above, you'll note that both Pro/INTRALINK 8.0 and Windchill PDMLink 8.0 have the same Pro/ENGINEER workgroup data management capabilities. Rest assured, PTC realizes that all of our customers have unique design environments and data management needs, and some customers may never require the power of Windchill PDMLink. Yet, because of the unification of PTC's data management offerings, Pro/INTRALINK 8.0 customers who need broader enterprise data and process management can easily upgrade to Windchill PDMLink.

### 8. Easy Migration—New Tools, Services Ease Process

To ensure a fast and easy transition, PTC has developed a Pro/INTRALINK migrator tool for migrating Pro/INTRALINK 3.X data to Pro/INTRALINK 8.0. This tool allows data migrations to be stopped and resumed. In addition, PTC has developed a rich set of services to help customers move to Pro/INTRALINK 8.0, which include

Pro/INTRALINK 8.0 pre-configured install and setup services, training services and data migration services. Our goal is to make your transition fast, easy and complete.

### Pro/INTRALINK 8.0: The Premier Pro/ENGINEER Workgroup Data Management Solution

Getting your Pro/ENGINEER data under control can lead to improved design productivity and shortened time to market. With its many enhancements, Pro/INTRALINK 8.0 is now the ultimate tool for workgroup data management. Now's the time to make the move! Learn more about the migration tools and services at [www.ptc.com](http://www.ptc.com) And see how easy the migration can be.

Copyright © 2005, Parametric Technology Corporation (PTC)—All rights reserved under copyright laws of the United States and other countries. Information described herein is furnished for informational use only, is subject to change without notice, and should not be construed as a guarantee, commitment, condition or offer by PTC. PTC, the PTC Logo, The Product Development Company, Product First, Create Collaborate Control, Simple Powerful Connected, Pro/ENGINEER, Wildfire, Windchill, Windchill PDMLink, Windchill ProjectLink, Windchill PartsLink, Windchill DynamicDesignLink, and all PTC product names and logos are trademarks or registered trademarks of PTC and/or its subsidiaries in the United States and in other countries.